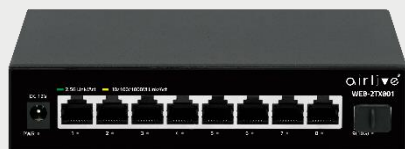


## 2.5Gbps Base-T WebSmart Multi Gigabit Switch

## 9-Port Multi Giga incl 8 x 2.5G RJ45, 1 x SFP+ 10G

WEB-2TX801

airlive®



8-port  
100/1000M/2.5G

Web  
Managed

QoS

Multi-Gigabit  
Auto-negotiation

Cat.5e cable  
suitable

10G SFP+  
Uplink

Bandwidth  
Control

VLAN

Loop  
Protection

Surge/ESD  
protection

## Overview

### Painless Upgrading your Network Connection to 2.5Gbps & SFP+ 10G Super High speed Web Management Switch.

The AirLive Multi-Giga switch, WEB-2TX801 is a Web Managed switch, which supports 8 RJ45 and 1 SFP+ ports for delivering up to 2.5Gbps extra high-speed connection on RJ-45 and 10G SFP+ on fiber optic. Supports WEB Management function and is easy to manage and maintain. The easy to operate WEB-2TX801 has several functions like VLAN setting for a more secure connection. QoS to have more control of the bandwidth and many more like, IGMP, Loop Prevention, Port-Base Mirroring, Port Isolation, Bandwidth Control, Security (MAC Address / table / search / static MAC; Storm control and more. With the 2.5G multi-Giga switch, you can connect to a variety of 2.5GbE-enabled devices, such as NAS | NVR | PC | Server | Laptop, for enjoying faster experience and handle bandwidth-hungry applications. Designed in a slim sized solid housing, it's an affordable, space-saving solution suitable to Home and SMB network applications.

## Features and Specifications

AirLive WEB-2TX801 2.5Gbps Switch with SFP+ 10G

- 8x 10/100/1000/2500Mbps RJ45
- 1x 10G SFP+
- Web Smart Management
- QoS; Priority management
- VLAN: enhanced security and performance
- Loop protection
- All ports at Multi Gigabit high speed, auto-negotiation
- Providing satisfied bandwidth for various network devices, such as online gaming, multi-media, NAS, Server system
- Existing Cat5e cable suitable, painless upgrading
- Compact size for Home or SMB Network Connectivity



### VLAN for enhanced network security

The VLAN 802.1Q settings can be used to separate traffic within a business such as isolating resources between network administrators and general users or between employees and public guest users.

### QoS for enhanced traffic control

QoS (Quality of service) is the ability to provide different priority to different applications, users, or video/voice/data flows, or to guarantee a stable level of performance to each data flow. This can be with Port-based Priority or Priority to queue.

### Extensive configuration options

The Airlive WEB-2TX801 comes with many configurations' options including, IGMP, Loop Prevention, Port Mirroring, Jumbo Frame, Green Ethernet and more.

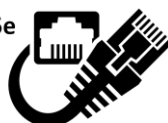
For the Security settings, there is Storm Control and Static MAC, also the Port Statistics can be monitored.



#### 2.5 Times Faster

2.5GbE is 2.5 times faster than standard Ethernet (1GbE), upgrade network performance to boost productivity.

Cat 5e



#### Works with existing cables

No special cables or connectors are required to take advantage of 2.5GbE. Simply use your existing CAT5e cables as normal with your new 2.5GbE infrastructure.

Model	AirLive WEB-2TX801
<b>Hardware</b> <ul style="list-style-type: none"><li>• <b>Device Interface:</b> 8x 10/100/1000/2500 RJ45 1x 1.25G/2.5/10G SFP+ 9-port totally Auto MDI/MDIX</li><li>• <b>Standard</b> IEEE802.3u 100Base-TX IEEE802.3ab Gigabit 1000Base-T IEEE802.3bz 2.5GBase-T IEEE 802.3z 1000BASE-X Gigabit Ethernet (optical fiber) IEEE 802.3ae 10G Ethernet (optical fiber) IEEE802.3x Flow Control and Back Pressure IEEE802.3d Spanning Tree Protocol IEEE802.3w Rapid Spanning Tree Protocol IEEE802.1q VLAN tagging IEEE 802.1p Class of Service</li><li>• <b>LED Indicators:</b> PWR (power supply), Port 1~8: Green LED on 2.5G Link, Yellow LED on 10/100/1000Mbps Link, Port 9: Blue LED on 10G Link, Green LED on 1/2.5G Link</li><li>• <b>Lightning Surge / ESD Protection:</b> Support Port Surge Protection: Common Mode 4KV, Differential Mode 2KV; Electrostatic ESD Air 8KV, Contact 6KV.</li><li>• <b>Mechanical</b> Solid Metal Housing, Desktop</li></ul> <b>Switch Architecture   Performance</b> <ul style="list-style-type: none"><li>• <b>Switching architecture: Store and Forward</b> Switch Capacity: Bandwidth 60Gbps Packet Forwarding Rate: 44.64Mpps Packet Buffer: 8Mbit MAC Address: 4K VLAN: VLAN range 1-4094, with a maximum active VLAN of 31 Jumbo Frame: 16K Transfer mode: Store and Forward MTBF:100000 hour</li></ul> <b>Web Management Software Function L2</b> <ul style="list-style-type: none"><li>• <b>Port Setting:</b> Port Switch Configuration, Port Speed Configuration, Port Duplex Configuration, Port Flow Control Configuration, EEE, Jumbo Frame</li><li>• <b>Link Aggregation:</b> Up to 2 groups, Static Group, Support LACP, Max. 4 members per group</li><li>• <b>Storm Control:</b> Broadcast, Multicast, Unknown Multicast, Unknown Unicast</li><li>• <b>Port Mirroring:</b> Supported</li><li>• <b>VLAN:</b> Access/Trunk/Hybrid, VLAN range Configurable VID from 1 - 4094;Max. 31 static VLAN groups</li></ul>	<ul style="list-style-type: none"><li>• <b>Port Security:</b> MAC Address Constraints</li><li>• <b>Port Isolation</b> Supported</li><li>• <b>Port Rate-limit:</b> Supported</li><li>• <b>Loopback Detection:</b> Supported</li><li>• <b>MAC Address:</b> Dynamic Address, Static Address</li><li>• <b>Spanning Tree Protocol:</b> STP/RSTP, Edge Port</li><li>• <b>Multicast:</b> IGMP Snooping, Router Port, Static IGMP Join, IGMP V1/V2</li><li>• <b>QoS:</b> Traffic classification, Supporting SP and WRR scheduling, Port Priority, Supports up to 8 queues per port</li></ul> <b>Services</b> <ul style="list-style-type: none"><li>• <b>Access Protocol:</b> HTTP</li><li>• <b>Diagnostics:</b> Port Statistics: Supported</li></ul> <b>Management</b> <ul style="list-style-type: none"><li>• <b>Manager Access:</b> HTTP</li><li>• <b>Manager IP:</b> Static Address, DHCP Client</li><li>• <b>User Management:</b> Supported</li><li>• <b>Firmware:</b> Firmware Upgradable</li><li>• <b>Configuration:</b> Upload and Download</li><li>• <b>Save</b></li><li>• <b>Restart</b></li><li>• <b>Factory Defaults</b></li></ul>

\* Specification will be changed without prior notice

\* All trademarks, logos and brand names are the property of their respective owners.

AirLive

Model	AirLive WEB-2TX801
<ul style="list-style-type: none"><li><b>Transmission Distance</b> 10Base-T: Cat3, 4, 5 or above UTP/STP(≤100m) 100Base-TX: Cat5 or above UTP/STP(≤100m) 1000Base-TX: Cat5 or above UTP/STP(≤100m) 2.5GBase-T: Cat5e or above UTP/STP(≤100m)</li><li><b>Fiber Medium:</b> 1000BASE-SX: 62.5μm MMF (multi mode) (Minimum range: 2m~275m) or 50μm MMF 1000BASE-LX: 62.5μm/50μm MMF (Minimum range: 2m~550m)or 10μm SMF (Minimum range: 2m~5km) 2500BASE-X: G.652D SMF (Single mode) (Minimum range: 2m~500m or 2m~5Km) 10GBASE-SR: OM1/OM2/OM3 or above MMF (Operating range: 2m~300m) 10GBASE-LR: IEC B1.1 and B1.3 SMF (Minimum range: 2m~10km)</li></ul> <b>Power</b> <ul style="list-style-type: none"><li><b>Power Input:</b> DC 12V/1A Power Adapter</li><li><b>Power Usage Max:</b> 11.29W</li></ul> <b>Environment</b> <ul style="list-style-type: none"><li><b>Operating Temperature:</b> 0°C to +40°C</li><li><b>Storage Temperature:</b> -40°C to +70°C</li><li><b>Working Humidity:</b> 10%~90%, non-condensing</li><li><b>Storage Humidity:</b> 5%~95%, non-condensing</li></ul> <b>Standard package of switch</b> <ul style="list-style-type: none"><li><b>Product size:</b> 16.00 x 9.00 x 3.50cm(L*W*H)</li><li><b>Package size:</b> 17.50 x 11.20 x 7.30cm(L*W*H)</li><li><b>Package Weight:</b> N.W: 0.33kg; G.W: 0.47kg</li><li><b>Package content:</b> 1 x Switch, 1 x Power Adapter</li></ul> <b>Standard carton package</b> <ul style="list-style-type: none"><li><b>Quantity:</b> 20 pcs / 1 carton</li><li><b>Dimensions</b> 52.00 x 38.50 x 20.50cm (L*W*H)</li><li><b>Weight</b> 10.4kg (G.W)</li></ul> <b>Ordering Information</b> <ul style="list-style-type: none"><li><b>Model:</b> WEB-2TX801</li><li><b>Name:</b> 9-port 2.5Gbps WebSmart Multi Gigabit Switch, incl. 8 x 2.5G RJ45 and 1x SFP+ 10G, Plug and Play, Auto-Negotiation</li><li><b>Related product</b> AirLive USB-25G USB3.1/3.0 to 2.5Gbps Base-T adapter</li></ul>	

\* Specification will be changed without prior notice

\* All trademarks, logos and brand names are the property of their respective owners.

AirLive